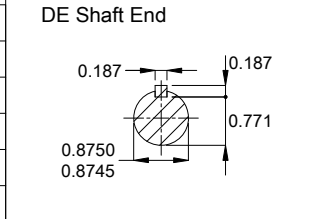


|   |
|---|
| Reinforce the foot with 2 mig welding spots |
| Fan cover - steel plate                     |
| Color Munsell N 1 matte black               |
| Painting plan 207N                          |
| Mounting MARKET F-1/B34R(D)                 |
| Mounting B34D                               |



|                     |            |  |            |
|---------------------|------------|--|------------|
| 3 HP 02 Poles 60 Hz |            | A  |            |
| Scale 1 : 4         |            |  |            |
| ECM                 | LOC        | SUMMARY OF MODIFICATIONS                     |            |
| EXECUTED            | HYBRISUSER | THREE PH. MOTOR ROLLED STEEL NEMA PREM. EFF. | HYBRISUSER |
| CHECKED             |            | FRAME 143/5TC IP55 TEFC                      | 00         |
| RELEASED            |            |  |            |
| REL. DATE           |            |  |            |

|           |            |  |            |         |
|-----------|------------|--|------------|---------|
| EXECUTED  | HYBRISUSER | THREE PH. MOTOR ROLLED STEEL NEMA PREM. EFF. | HYBRISUSER | 00      |
| CHECKED   |            | FRAME 143/5TC IP55 TEFC                      | EXECUTED   | CHECKED |
| RELEASED  |            |  | RELEASED   | DATE    |
| REL. DATE |            |  | VER        |         |

PREVIEW

WDD 00

SHEET 1 / 1