

# CFW320-MINI DRIVE



*The CFW320 is a high-performance variable speed drive for three-phase induction motors, ideal for applications on machines or equipment that require precise control and easy operation. With a compact size, contactor-like installation, selectable WEG vector (VVW) or scalar (V/F) control, built-in operating interface (HMI), SoftPLC, free WPS programming software and plug-in accessories to add functionalities, it is a flexible solution with excellent cost-benefit.*



## Standard Features

### ▾ Ratings:

- ¼ to 2HP @ 3/230VAC, 1/120VAC.
- ¼ to 3HP @ 3/230VAC, 1-Phase to 3-Phase.
- ¼ to 5HP @ 3/230VAC, 3-Phase to 3-Phase.
- ½ to 10HP @ 3/460VAC, 3-Phase to 3-Phase.

### ▾ Listed under new UL61800-5-1.

### ▾ Heavy Duty (150% Overload for 60 Seconds) rated as standard.

### ▾ Switching frequency: 2.5 to 15kHz.

### ▾ Conformal Coated Circuit Boards as standard.

### ▾ Finger-safe IP20 enclosure.

### ▾ Scalar (V/F) and WEG Voltage Vector (VVW) control.

### ▾ SoftPLC Built-in; Programming software “WPS” is free.

### ▾ Built-in 4 Digital inputs, 1 analog input, and one Form-C relay output.

### ▾ Two independent slots, one for communication and another to expand drive I/O capability.

### ▾ Optional Communication: Modbus RTU, BACnet, DeviceNet, Profibus DP, CANopen, Modbus TCP, Ethernet/IP.

### ▾ Optional I/O plug-in Modules.



## Applications:

- Centrifugal Pumps
- Fans/Blowers
- Blenders / Mixers
- Centrifuges
- Compressors
- Conveyors
- Roller Tables
- Granulators
- Commercial Dryers
- Rotary filters
- Grizzly Feeders



# CFW320 - MINI DRIVE

## Flexibility

### Flash Memory Module (MMF-uDrives Accessory)

It downloads the original parameter setting to several CFW320 variable speed drives turned off.



### 2 Slots for Function Expansion with Accessories

Slots for  
accessibility  
and  
network  
communication  
module

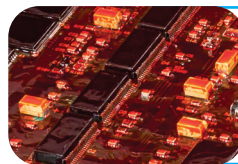
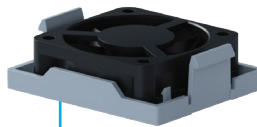
Slots for  
input and  
output (I/O)  
expansion  
module



### RFI Filter (Accessory CFW320 - KFA / B / C)

Category C2 or C3 to  
reduce the electromagnetic  
interference emission level

### Fan Easily Removable



### Greater Protection for Aggressive Environments

Standard coating classified as 3C2 according to IEC 60721-3-3 on all versions, ensuring greater protection to the internal circuits against corrosive atmospheres.



V.J. Pamensky Canada Inc.  
175 Gordon Baker Road  
Toronto, ON M2H 2N7  
1 (877) PAMENSKY (726-3675)

[www.pamensky.com](http://www.pamensky.com)

